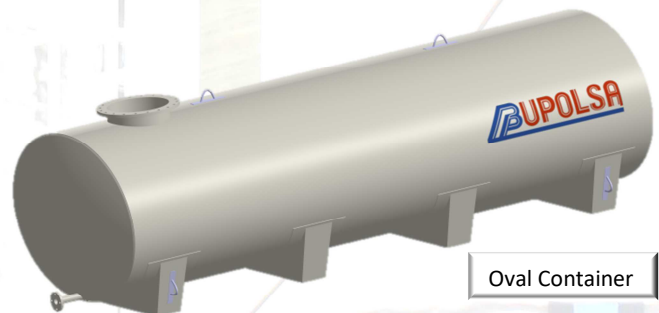
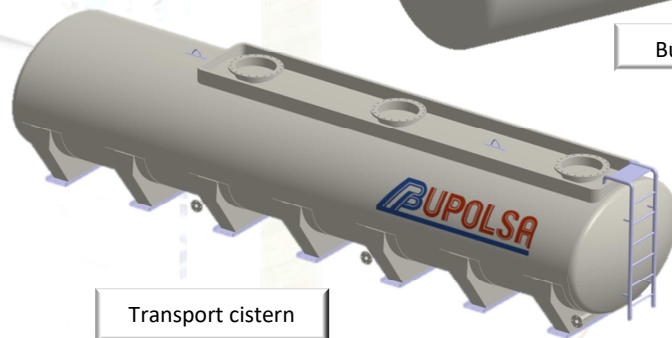
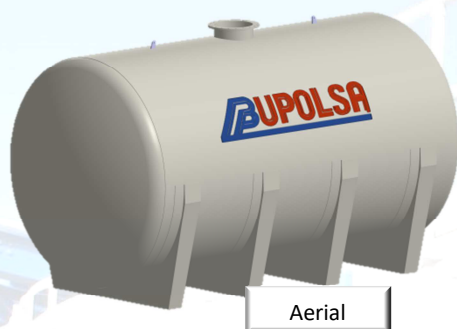


## Horizontal storage tanks

### Description

Made in polyester reinforced with fiberglass (GRP), used to store all types of liquids, from water to other more aggressive products such as: hydrochloric acid, caustic soda, sulphuric acid, etc. Types:

- Aerial
- Buried
- Elevated
- Transport cistern
- Oval container



### Characteristics

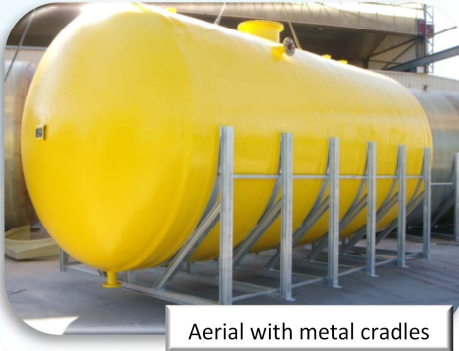
- Completely smooth interiors rich in polyester that allow a perfect evacuation and great chemical resistance to the different products to be stored.
- Percentage of Fiberglass from 55 to 60%, for a high mechanical resistance.
- High resistance to external corrosive agents.
- Easy cleaning, high durability, maintenance is not necessary and easy to repair in the event of a break.
- GRP is resistant to both high and low temperatures, avoiding condensation. It is also a good electrical insulator.
- The calculation and design is done in accordance to the product to be contained, the working temperature and the concentration of it.
- Lightweight and easy transportable equipment.

### Calculation and design

- BUPOLSA makes all of their tanks according to the manufacturing: UNE-EN 13121, UNE-EN 976 y AD-2000-Merkblatt-N1.
- For the design of the equipment takes into account volume, product to contain, the density, the working temperature and concentration of the same.



Aerial with GRP cradles



Aerial with metal cradles



Buried

### Geometries and sizes

- Capacities of up to 200.000 liters.
- Diameters (mm): 800, 1.000, 1.200, 1.380, 1.620, 2.000, 2.325, 2.500, 3.000, 3.400, 4.000 and 4.200
- With galvanized carbon Steel support feet, legs or GRP skirt.



Elevated



Transport  
Cistern



Transport  
Cistern

### Available accesories

- Screwed manhole in GRP, elliptical or dome with lid in stainless Steel.
- Tubings in GRP PRFV DIN 2576 or ANSI#150 FF
- Fixing anchors to the ground and lifting hooks
- Transparent visual level systems, using pulleys, level detectors, etc.
- Venteo
- Agitator support
- Vortex or Baffles
- Supports for pipe
- Ladders, handrail and walkways

